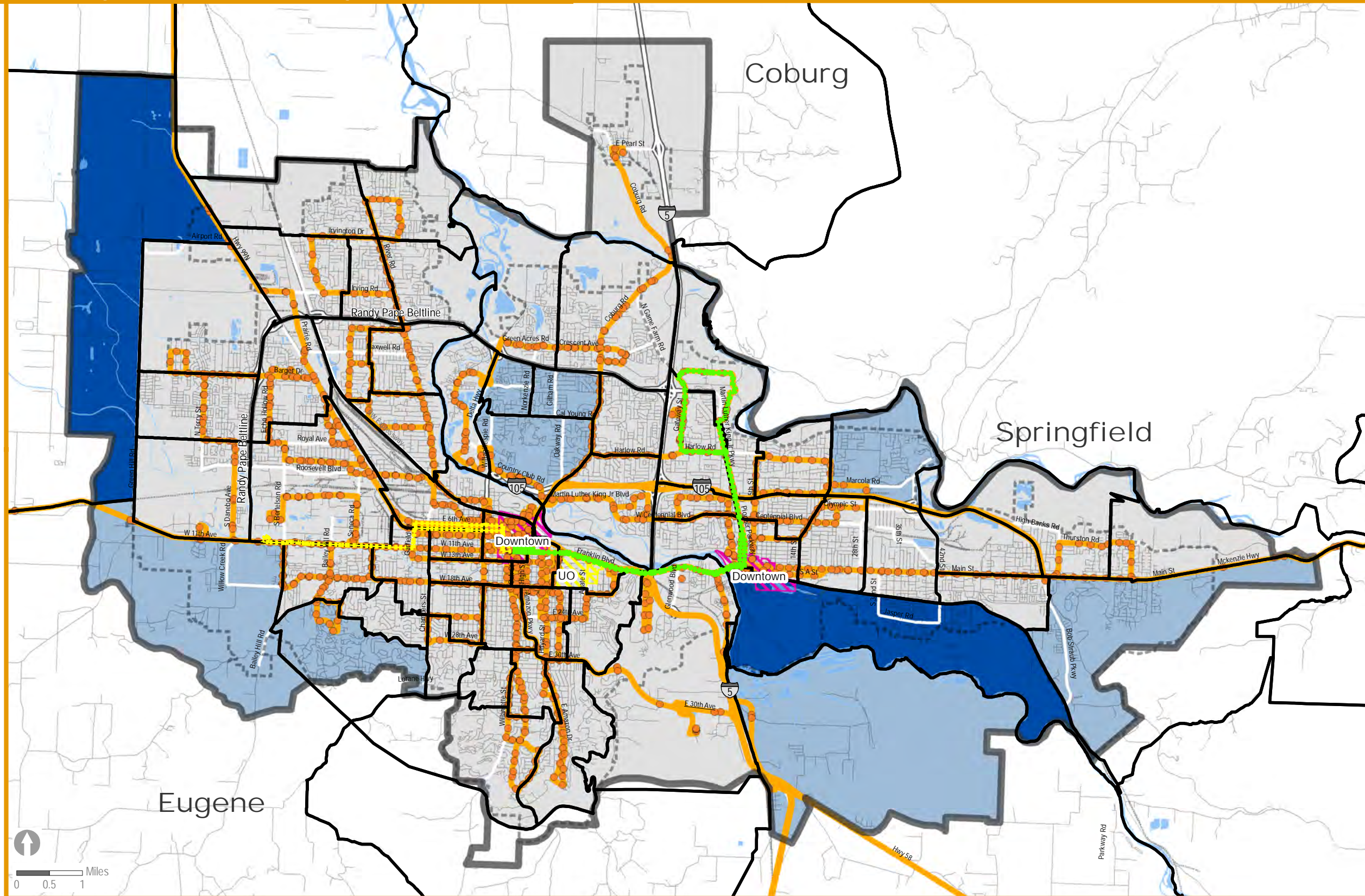


# Equity & Opportunity Assessment Transportation Access

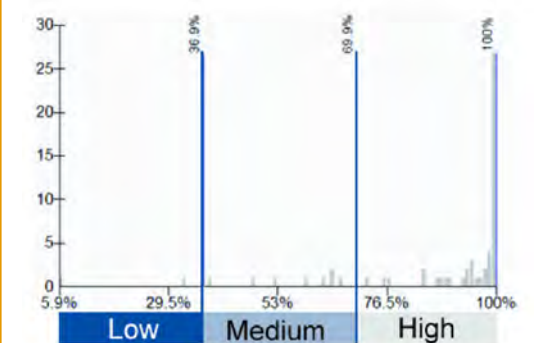
## Access to Public Transit



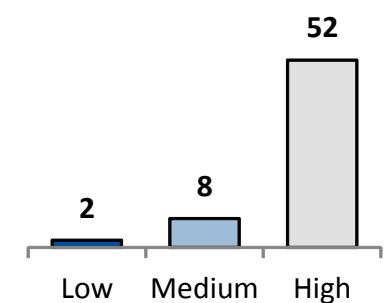
This map shows access to bus stop for households. About 92% of households are within a 1/2 mile of bus stops in the Metropolitan Planning Organization area.

For this map, households are defined by residential site addresses. Access to bus stops is measured by analyzing residential addresses in the Metropolitan Planning Organization within a 1/2 mile of bus stops by tract. Bus stops are active Lane Transit District stops. For some tracts the actual tract boundary extends beyond the Metropolitan Planning Organization area, but the data is only for residences in the area boundary.

The full range of data for each map has been divided into thirds to create low, medium, and high percentage categories. A histogram is also included to show that the data is not necessarily distributed equally across these three categories. Less than 1% of households within a 1/2 mile of bus stops are in the 2 census tracts in the lowest percentage category.



The chart below shows the number of tracts in the Metropolitan Planning Organization Area that have low, medium, and high percentages.



Map date: 9/19/13 Map data: Regional GIS, Lane Transit District  
 Caution: This map is based on imprecise source data, subject to change, and for general reference only. The work that provided the basis for this map was supported by funding under an award with the U.S. Department of Housing and Urban Development. The substance and findings of the work are dedicated to the public. The author and publisher are solely responsible for the accuracy of the statements and interpretations contained in this publication. Such interpretations do not necessarily reflect the views of the Government.

- Census 2010 Tracts
- Metropolitan Planning Organization Area boundary
- Urban Growth Boundaries
- Bus Stops
- Bus Routes

- Percentage of Households within a 1/2 mile Distance of a Bus Stop**
- Low: 5.9% - 36.9%
  - Medium: 37% - 69.9%
  - High: 70% - 100%
  - EmX Bus Route (BRT)
  - Under Development - West Eugene EmX Route